



# ST PAUL'S LUTHERAN HOMES HAHNDORF

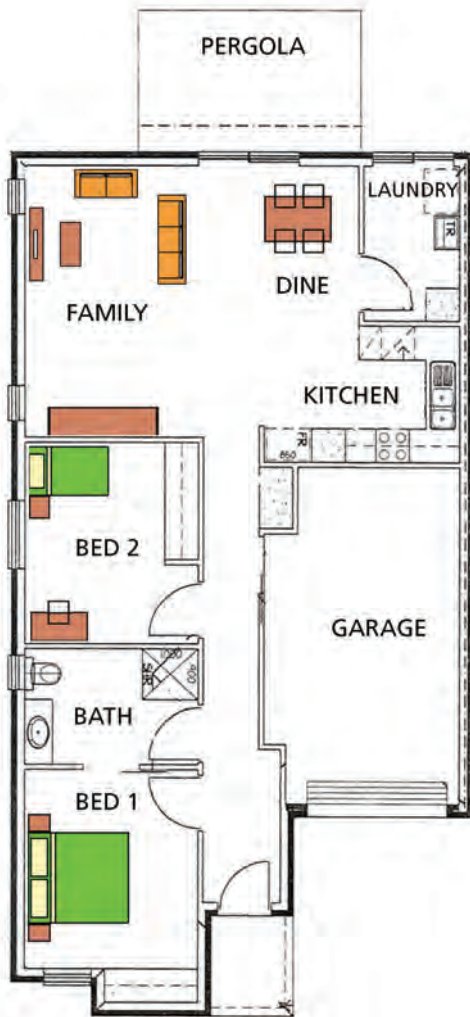


MAIN ROAD HAHNDORF

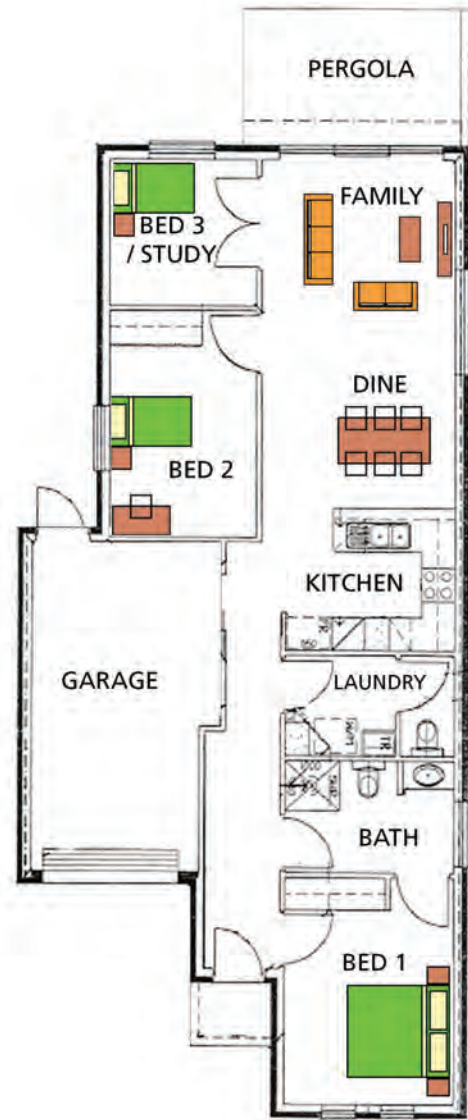
St Paul's Lutheran Homes Hahndorf has embarked on the next stage of its development of the St Paul's Court Retirement Village situated next to St Paul's Lutheran Church on Main St Hahndorf..

## HOUSE 1, 2 & 3

*House 3 has additional WC*



## HOUSE 4 & 5



House	No of Bedrooms	Bathrooms	Living Area sqM	Total Area** sqM
House 1	2	1	90	125
House 2	2	1	90	125
House 3	2	1 + WC*	97	132
House 4	3	1 + WC*	97	131
House 5	3	1 + WC*	97	131
House 6	3	1 + WC*	97	131
House 7	3	1 + WC*	97	131
House 8	3	1 + WC*	97	131

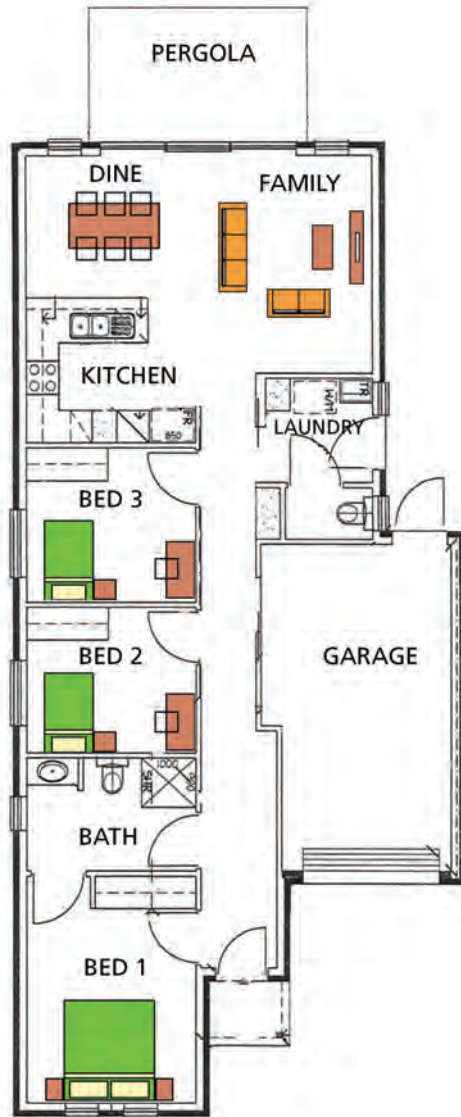
\* indicates that there is one bathroom with access from master bedroom and passage + separate toilet room (WC)

\*\* Total Area includes Living Area + single garage + entry porch + rear pergola

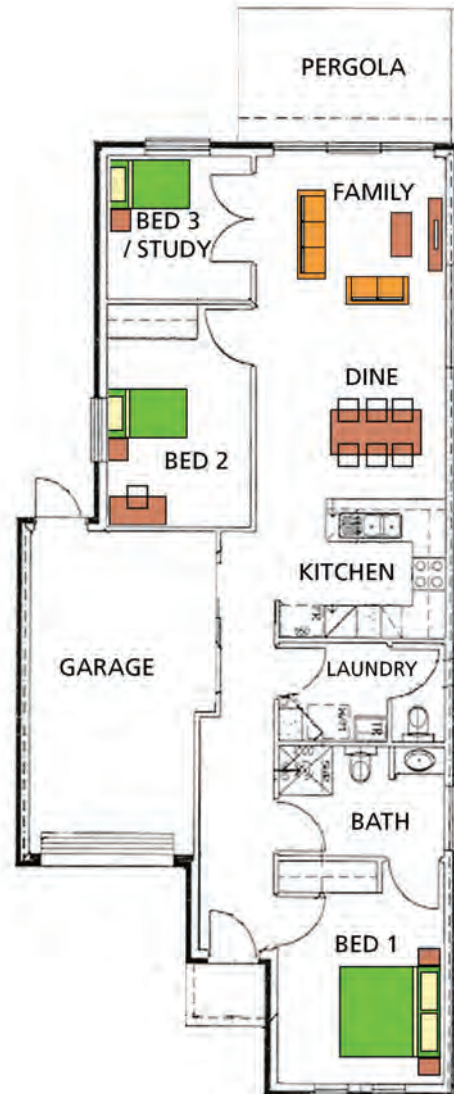
The first stage with 5 homes was completed in August 2014 and now the second stage has commenced construction in November 2014 with completion expected in June 2015.

## HOUSE 6 & 8

*Robe in bed 3 only included in house 8*



## HOUSE 7



*For enquiries regarding these new homes please contact  
St Paul's Lutheran Homes Hahndorf*

**Phone: 8398 8600**

office hours only Mon-Fri 9:00am to 4:30pm

Email : [admin@st-pauls.org.au](mailto:admin@st-pauls.org.au)

# SITE PLAN



*Built By Rossdale Homes*



*Because trust is a must.*